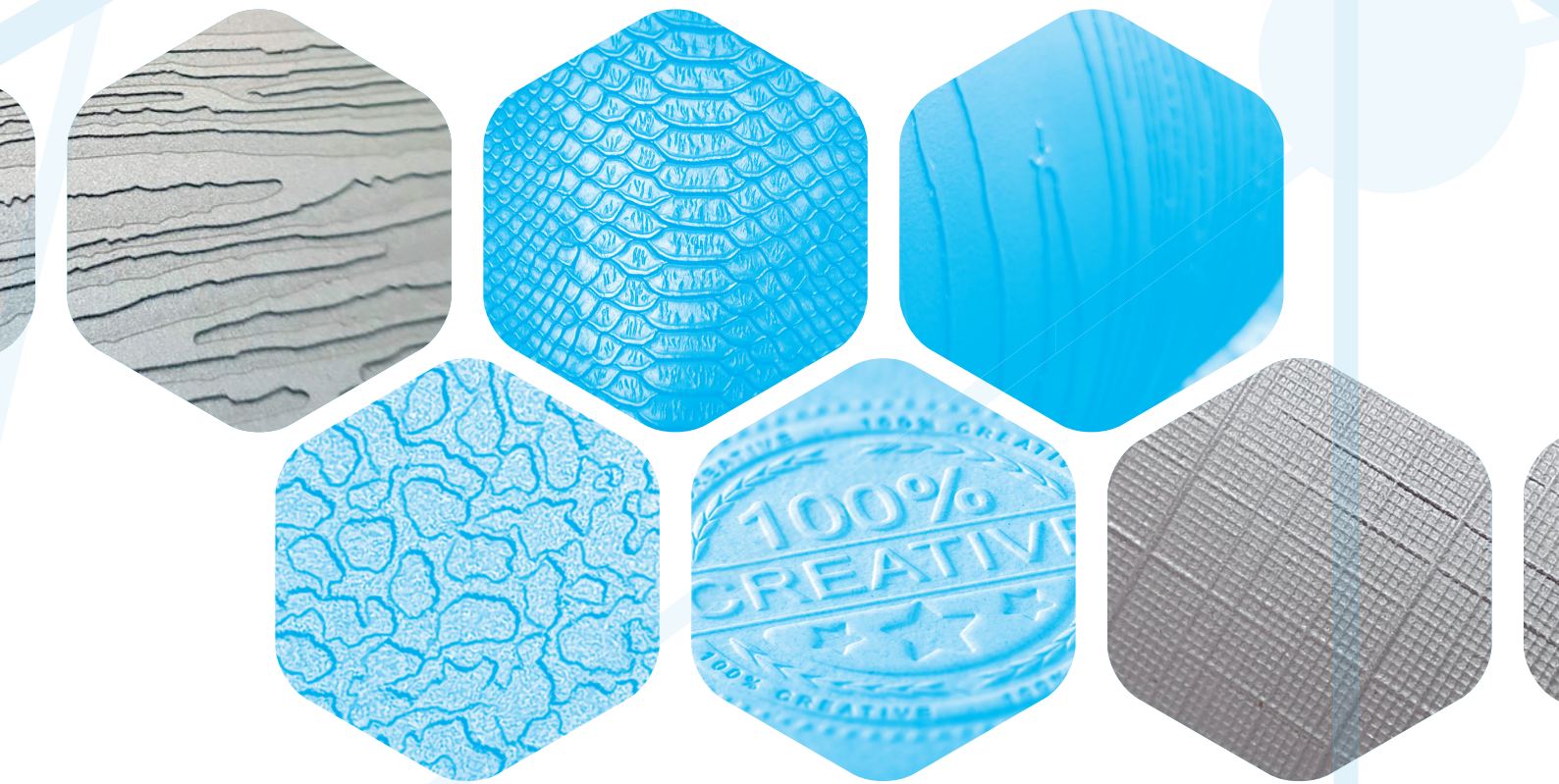


TSL

Texture Solutions Ltd



**PROVIDING SURFACE TEXTURES
ON MOULDS AND ROLLERS**

For all cosmetic and functional needs



Texture Solutions Ltd



Design

At Texture Solutions Ltd we are dedicated to meeting the customers design needs, from the matching of existing surface textures to the realisation of ideas culminating in the creation of new bespoke patterns. By working hand in glove with the client our design team aims to realise their vision, ensuring the best possible results.

We pride ourselves on outstanding levels of communication, allowing the client to achieve the perfect result whilst maintaining tight control on costs.



Textured solutions for Moulding and Embossing Industries covering a diverse range of products.

Automotive
Building
Travel and Leisure
Home and Garden
Medical
Paper and Tissue
Sheet Metal
Food and Packaging
plus many more...

Texture Solutions Limited are an industrial engraving company based in Manchester UK specialising in the texturing of injection moulds and embossing rollers. Boasting over 100 years of engraving experience, TSL combine traditional and modern techniques to provide extreme detail and repeatability to meet all production needs and demands.

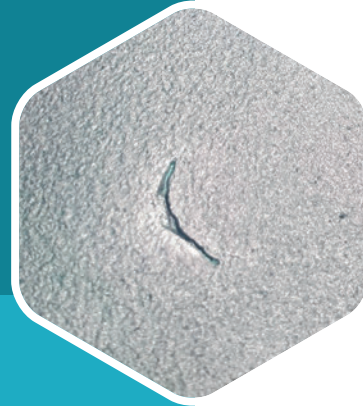
Started and run by technicians, you will speak directly to experienced mould and roller engravers who understand the complexity of tooling and texturing. We will walk through each stage of the process with the customer ensuring they are happy with the procedure, lead time, and costs involved at all times.

We are proud of our journey and look to expand on our current investment into new machinery and equipment, manpower and increased capacity.

We pride ourselves on our understanding of the customers' needs for quality, efficiency and cost whilst offering a friendly informative attitude to our work.



Mould Engraving



Mould Refurbishment

At TSL we take care of our customers budget by looking for ways to save them money, using our experience we can often refurbish a worn, damaged textured surface, breathing new life to existing tools and products without the costs for polishing off and re-texturing. We pride ourselves on our approach to texturing and how we advise and build a close relationship with our customers so they can trust our service and the advice given.

Damage Repair

TSL can repair damaged textured mould tools using various methods including hand repairs, laser welding, polishing and local chemical etching getting our customers tools back in production with minimal downtime. It's how TSL began, 35% of our work requires fast turnaround on repairs, we understand and will always keep space in our production so we can provide this service to our customers here in the UK.

Onsite

TSL started as an on-site unit back in 2013 so we are delighted to announce that we will be once again investing heavily into our on-site unit so we can offer a solution and quick turnaround on repairs and gloss adjustment for our customers in the UK and Europe.

Full Engraving

We can offer our customers various options for texturing on all types of moulds for cosmetic and practical purposes. Our technicians have decades of experience so can advise on a project in every aspect from tool preparation prior to texturing, pattern design and application to ensure our customers receive a full engraving service they can rely on.

Designs

Here at TSL we can create new bespoke designs or replicate existing textures matching any design you may have on a current mould surface.

Laser Welding

TSL can manage laser welding for both mould and roller repairs, working closely with laser weld operators we are happy to control the welding making sure we provide the best possible results on repairs. TSL will advise and provide a weld that will etch with the base metal evenly limiting visual defects and small holes that can often be visible with the welding process during a texture repair. TSL have developed and tested with our welding suppliers to ensure we can offer the best possible welded local repairs.

Polishing

TSL are here to manage your polishing needs such as a full polish out of existing texture, local polishing for texture repairs or high gloss finishes. We can advise and coordinate expert polishers when required in conjunction with your texturing needs. Downtime can be minimised with an on-site polish and texture repair or blast at short notice.

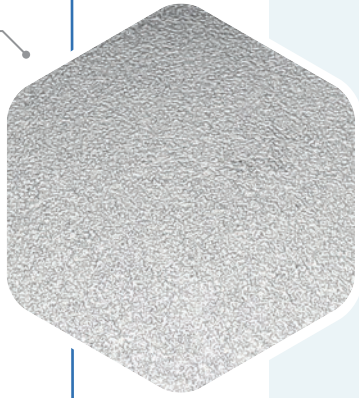


Polishing



Laser
Welding

Mould Repair



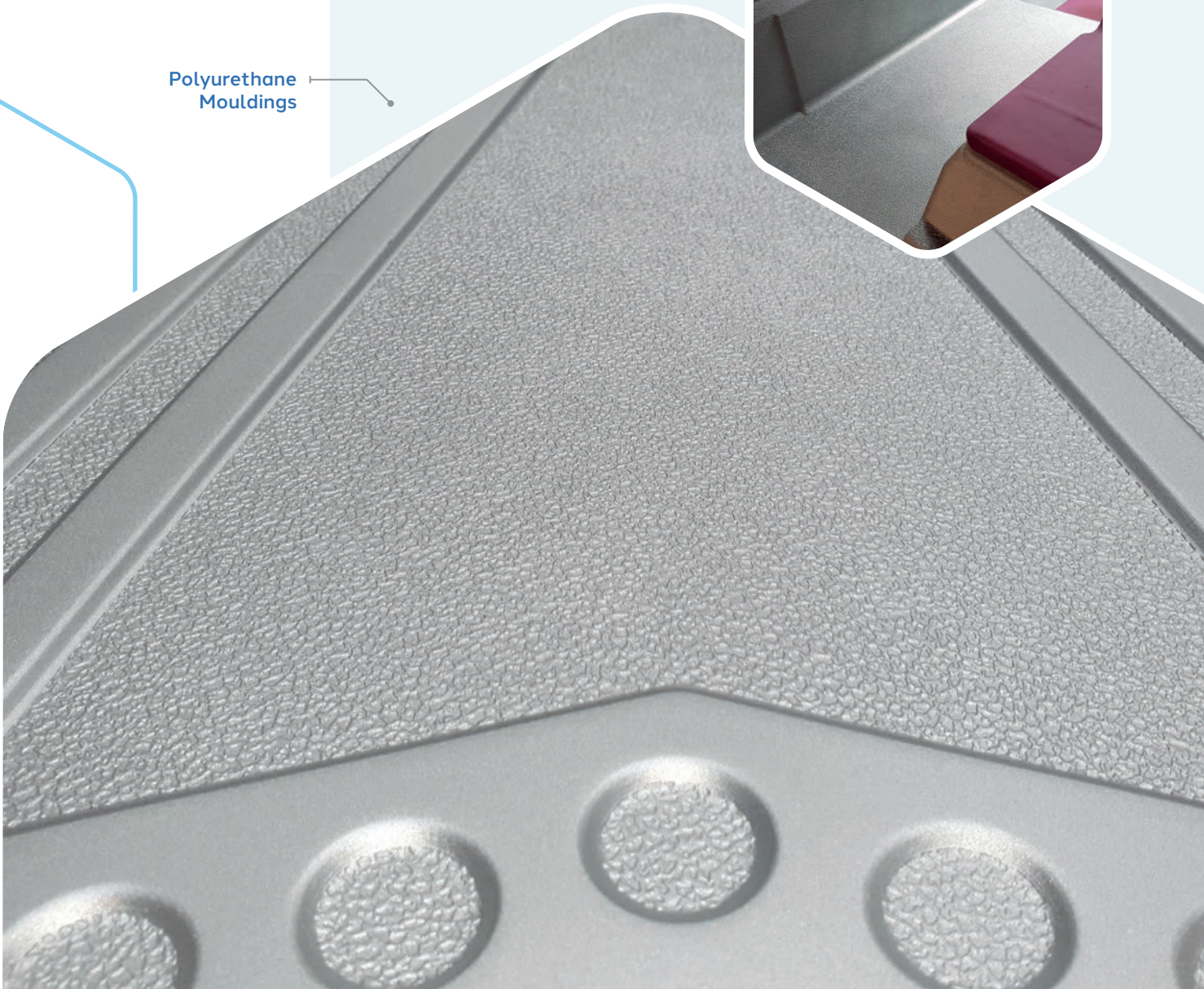
Mould Repair

TSL specialise in texture repairs and having grown our business offering customers speedy low-cost repairs we have built a strong understanding of our customers' expectations. We will repair and have your moulds back into production without adding any unnecessary premium rates for repair work. We provide a service that will keep our customers informed throughout and offer a bespoke and transparent approach to our repair work and costs.

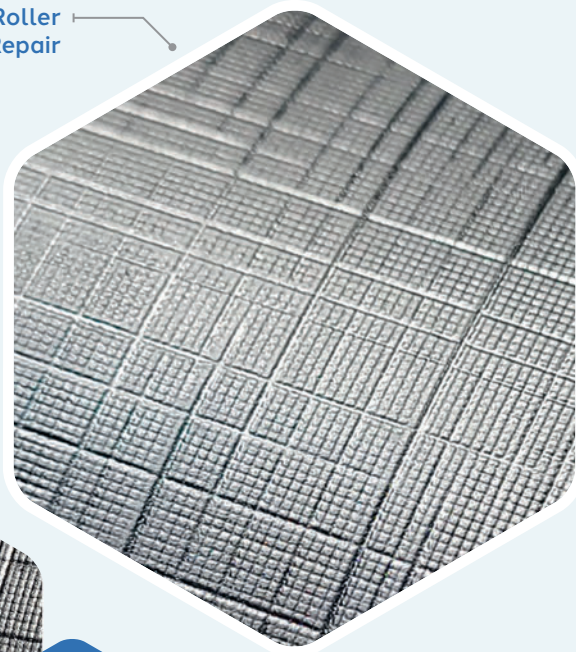
Interior
Leather Grain



Polyurethane
Mouldings



Roller
Repair

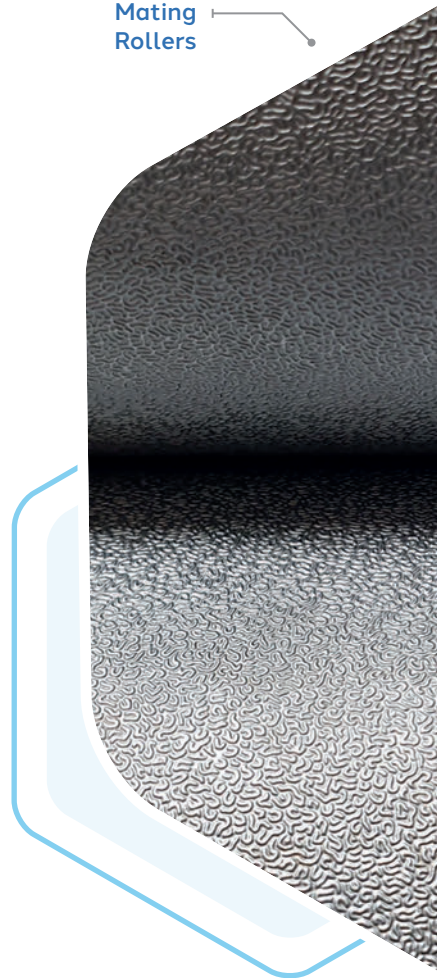


Roller Repair

TSL will use our hardened master tooling to repair damages to engraved rollers so that the original design is seamlessly recreated back into the metal surface. Larger damages can be laser welded, polished back locally and re-textured often saving the need to grind off and re-engrave the full roller. TSL will always look for a repair solution to damages and can advise and manage the correct protective coatings to protect the roller for future use.

TSL can manage laser welding for both mould and roller repairs, working closely with laser weld operators we are happy to control the welding making sure we provide the best possible results on repairs. TSL will advise and provide a weld that will etch with the base metal evenly limiting visual defects and small holes that can often be visible with the welding process during a texture repair. TSL have developed and tested with our welding suppliers to ensure we can offer the best possible welded local repairs.

Mating
Rollers

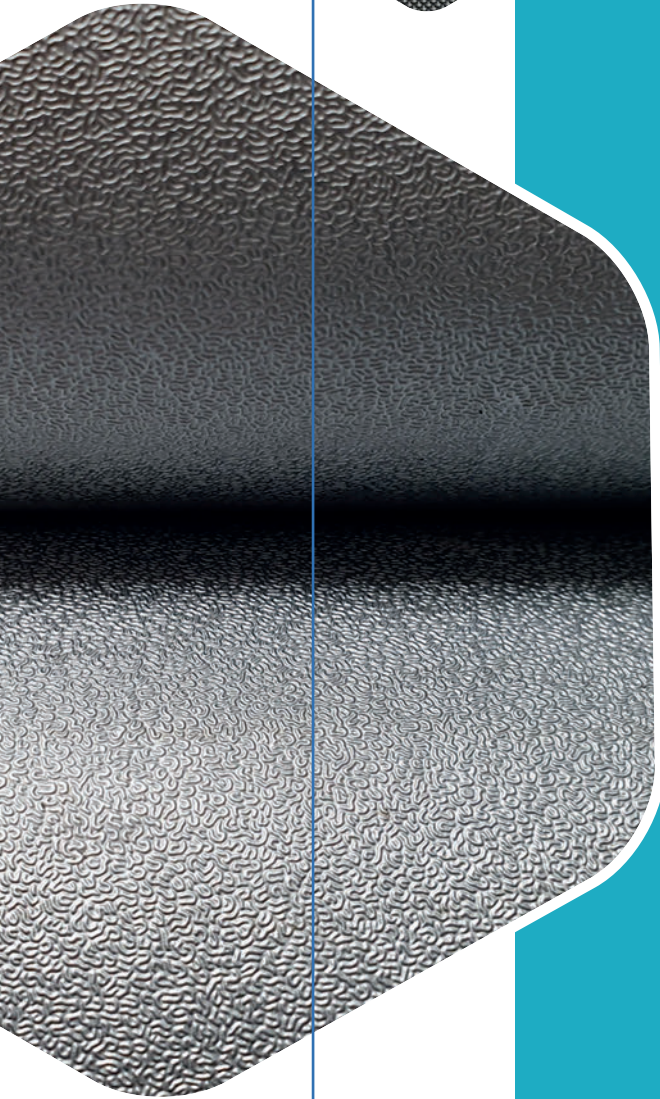
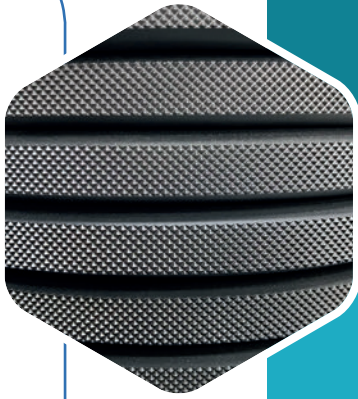


Pinseal



Roller Engraving

Ply-bonding
Wheels



Decking
Roller



Full Engrave

Our experienced technicians have multiple engraving options available including Mill engraving, direct print, laser engraved ebonite and CNC machining. Each individual job is discussed with the customer and the best option is picked to save them money and cut down on lead times.

New Designs

With the latest technology TSL can scan designs capturing the pattern, laser cut into ebonite tooling and reproduce onto a new base matching the product to the finest detail. We offer a large library of popular embossing designs as well as a customised texturing service. Our design team work with the customer to create a new design that is right for them and their product using new or existing artwork.

Damage Repair

Most damages can be rectified with our laser welding, polishing or hand repairing services. The finer and more challenging damages can be repaired using traditional machine engraving methods.

Finishing

Various finishes are available from dull matt to high gloss with a hard chrome plate protection. We also offer a mirror chrome and matt chrome finish for production line calendar rollers.

Onsite Re-alignment

TSL offer an onsite service to re-align mating rollers carefully bring them back into registration with as little down time as possible.

Servicing

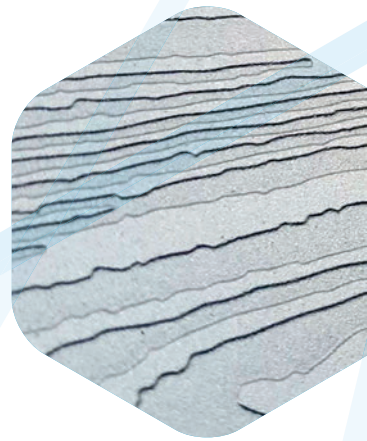
Onsite inspections highlight any wear or damages to engravings potentially preventing a stop in production if caught early enough. Servicing can be booked in during shutdown weeks or at the customers earliest convenience.

Capacity

With an increased capacity of up to 4.5 metres in length and 820mm diameter our roller engraving department can cater for most embossing rollers.



Texture Solutions Ltd



Unit 1, Taylor Lane
Denton, Manchester. M34 3NQ

Admin

0161 336 1159

christine@texturesolutions.co.uk

Mould Department

07794 626 584

martin@texturesolutions.co.uk

Roller Department

0758 521 2037

matthew@texturesolutions.co.uk

Design Department

07557 797 783

kevin@texturesolutions.co.uk

texturesolutions.co.uk